

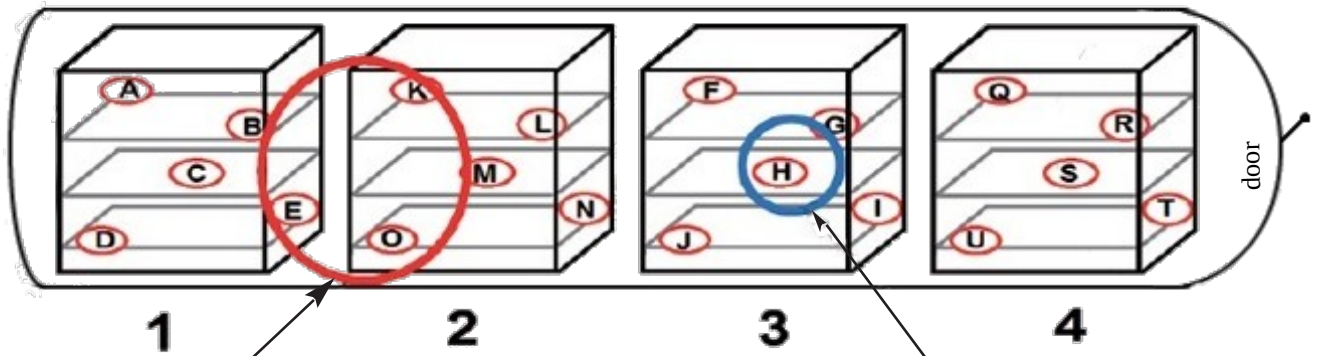
Retort mapping



We qualify all your static or rotary retorts

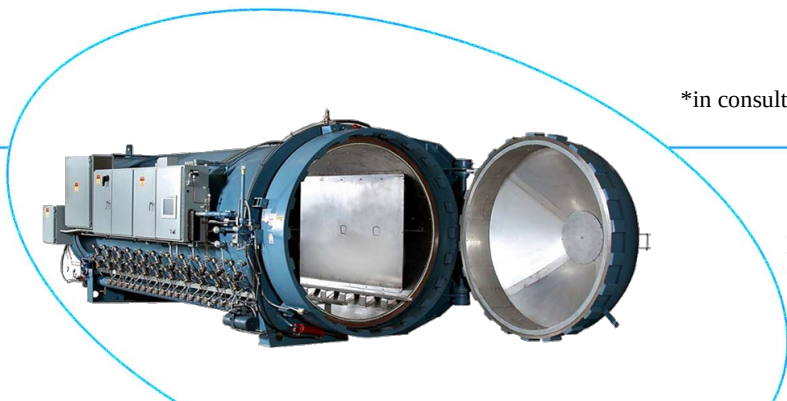
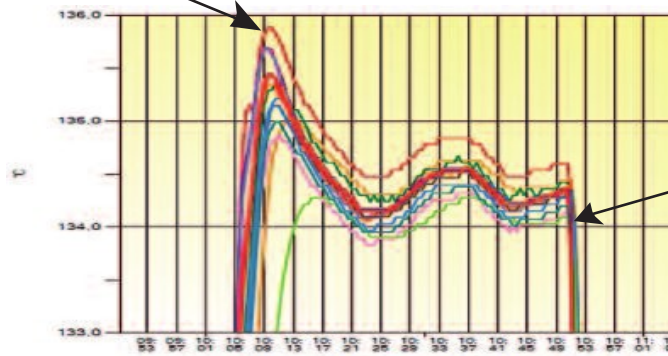
°C
°F

Identification of cold and hot spots
Strict compliance with acceptance criteria
Commitment* on the objective of thermal homogeneity to be achieved



Hot zone

Cold zone



*in consultation with your Quality Service



Retort mapping



We qualify all your static or rotary retorts

Objective

Manage any necessary adjustments if thermal dispersion is higher than expected

Guarantee the expected performance of the retorts

Issue a mapping report that is also a report of approval*

Commitments

Reporting of the report within 30 days containing the applicant's requirements

Compliance of performance with acceptance criteria

Provide calibration certificates for all data loggers used

Information on the possibility of energy savings (steam, compressed air and water)

Methodology

Metrology control of your retorts

⇒ possibility of calibration by us

Verification of controllers (temperature/ pressure)

⇒ adjustment of parameters if necessary

Critical reading of the programmed process

⇒ correction or if necessary re-writing by our expert

Instrumentation of 5 loggers minimum per basket

*unless there is a major defect on the retort

